

N 47° 16' 30" W  
S.E. cor. Perry Mill

N 66° 45' W  
5. clay cor. at school

N 71° 50' 00" W  
S.R.M. 1115  
N 50° 31' 30" W  
Court house  
N 89° 11' 30" W  
Dorris N.S. 06.64  
40.00 ch.

N. LINE Sec 37 T 6 NR 1 W BEAR

S 88° 08' E  
P-C 186492.54  
P-C 103191.95

not certain  
N 15° 09' 30" E.  
STEVENSON

N 77° 5' W  
court house  
Bearing S 83° 02' E

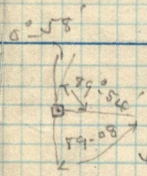
S 2-1  
E line Taylor

378

S 70° 07' 30" W  
clearing on Prigg  
S 75° 15' W  
N. clearing on Thompson

center 6th St.

S 67° 05' E  
0.5-PK.



268.4  
268.4  
295.02  
E 368.45  
1.26 x 2.19  
min gold cor.

762.4 ~ 25 to 26.5  
394.  
368.4  
37.5  
5.97  
358.2  
308.2  
394.02

June 21-09 From the point 295.02 S 89° 02' E.  
No 58 E and 300.58 W 368.45 from  
cor. Taylor + 25 ft - 2 rods  
89-08 S 89° 02' E, 260.2, 3 ft. +  
90-06 fill 3.6 ft N of old sec. cor  
S.E. cor sec. 37 which  
89-54 I replace by this in old  
hole in old pile of stone.

2655.93 intersect 1.4 St. N. 2nd cor. 40.00 ch. N. of 1/4 cor. on show

E. L. LINE NW 1/4 Sec 37 T 6  
By Computations S 0° 20' 38" N.